

Police Point Cottage

📍 VICTORIA



Police Point Cottage

📍 Point Nepean Rd, Portsea, VIC 3944

👥 6 📺 5 ♿ DISABLED ACCESS 🧒 CHILD-FRIENDLY 🐾 PETS-ALLOWED

Police Point Respite Cottages have been made available to OTIS guests through the generosity of The Rotary Club of Sorrento. The Cottages are situated on the 17.5 hectare Police Point Shire Park, in beautiful Portsea.

Visitors can access Point Nepean and the former Quarantine Station to see the remains of the fortifications and quarantine station and can follow interpretive trails.

The views in the area can only be described as extraordinary. Take a gentle walk to the bay or to the heritage Quarantine Station and have a coffee at the information centre. Explore the natural beauty of the region, sit and gaze at the beautiful bay, have a coffee in Portsea or visit to the renowned Portsea pub.

The townships of Sorrento, Portsea and Blairgowrie are close by with shopping, cinema, café and restaurant. Over 18 golf courses are within a short drive, as is the beautiful Red Hill district with wineries, cellar doors and galleries.



OTIS
THE FOUNDATION
BREAST CANCER RETREATS

☎ (03) 5444 1184 ✉ bookings@otisfoundation.org.au

📍 PO Box 1191, Bendigo Central, VIC 3552

otisfoundation.org.au



Police Point Cottage

📍 VICTORIA

Accommodation:

There are only four cottages in the park used for accommodation, cottage number two is available for OTIS guests. Police Point Cottage accommodates six guests in a comfortable and relaxed setting. It has a fully self contained kitchen and all modern conveniences. All linen is provided.

Availability:

Police Point Cottage is available for a five night stay from a Monday to Saturday.

Location and Area:

The Cottages are situated on the 17.5 hectare Police Point Shire Park, Portsea, which is approximately a 1.5 hour drive from Melbourne's CBD.

Police Point Shire Park was created in 2004 when the federal government gave the Shire 17.5 hectares at the entrance of Point Nepean to the Mornington Peninsula Shire. The park was the original boundary and entry to the Quarantine Station, and later used by the Department of Defence. With its outstanding coastal scenery and panoramic views of Bass Strait, the park has a rich history that played an important role in shaping the early settlement, quarantine and defence of Victoria.

House Rules:

Pets are not permitted and the property is strictly smoke-free.

Heating / Cooling:

There are two split system heating and cooling units within the Cottage. One unit in the main bedroom and one in the main living area.

Key access:

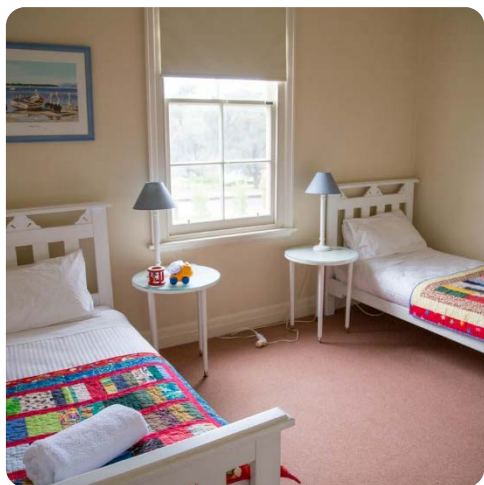
There are two entrances into Cottage 2 and there are key safes at both points. Please enter via the entry that is directly opposite the car park with the black and silver key safe.

What to bring:

Guests are required to bring their own food and personal items. All linen including bedding and towels are provided for your use.

Other considerations:

There are two entrances into Cottage 2 and there are key safes at both points. Please enter via the entry that is directly opposite the car park with the black and silver key safe.



Retreat Supporters



The Rotary Club
of Sorrento Inc.

THE **OTIS**
FOUNDATION
BREAST CANCER RETREATS



(03) 5444 1184



bookings@otisfoundation.org.au



PO Box 1191, Bendigo Central, VIC 3552

otisfoundation.org.au

